



Blue Sky ERP Power BI Reports

Pre-Built Power BI Reports and Semantic
Models for your Epicor Kinetic ERP



Power BI





Available for Cloud and On-Premise customers, the Reports, Semantic Model and Lakehouse are hosted within a Premium Power BI Workspace allowing the use of all premium features available.

“ Blue Sky ERP’s Power BI solution for Epicor analytics is great and with this new embedded capability it makes a seamless integration right into Epicor. ”

Jose Gomez
Co-founder, www.epiusers.help

The Blue Sky Business Intelligence Application harnesses the capabilities of Microsoft Power BI and merges this with our own in-depth understanding of Epicor ERP data structures and business processes to deliver interactive reports and analytics which are meaningful to both Epicor and non-Epicor users.

Who are Blue Sky ERP?

Blue Sky ERP is a consultancy and services practice which specialises in Epicor ERP software.

Established
2017

Over 200
Years Combined
Experience

20
Team Members

Highly Skilled
& **Focused Team**

We provide services to Epicor customers new and old with ERP implementations, upgrades, training, improvement projects and custom solutions. We work with customers on varying levels of engagement from providing an ERP health check in the form of a business process review, providing detailed analysis and solutions to specific process areas, being part of an implementation team or being part of the ERP rescue team when things go wrong.

Microsoft
Partner

EPICOR
Authorised Partner



Free Demo With Your Data

Blue Sky offer a free demo to all clients interested our reporting solution. Demonstrations can optionally be provided connecting to a client’s own on-premise or cloud application. Demonstrations are provided at no charge and can be tailored to your specific requirements.



The Reports

Our out-of-the-box suite of reporting applications cover business areas such as Sales, Finance, Inventory, Purchasing and Production. It allows each department or team to gain valuable insights on trends and anomalies empowering users to quickly drill down into your data and discover.



Report Access

The reports can be accessed via a web browser, mobile application or embedded within your Epicor Kinetic application. With our Premium workspace it is possible to embed an entire Report, Dashboard or distinct Visualisation into the Active Homepage or a Kinetic application.



Fully Customisable

Extensive flexibility and control over Report design, layout, and data Calculations. Users have the ability to edit pre built reports by changing the columns or style of visualisation. The Power BI service provides the ability to edit any of the calculated measures in the semantic models using the DAX query language. Our Data Admin tool allows user to select additional tables and columns from Epicor. In addition to editing existing reports the user can create entirely new reports against any of the semantic models.*



Licensing

There is one simple monthly fee payable to access all available content and you can share the reports to an unlimited number of viewers, via browser, mobile application or embedded within your Epicor Kinetic ERP.

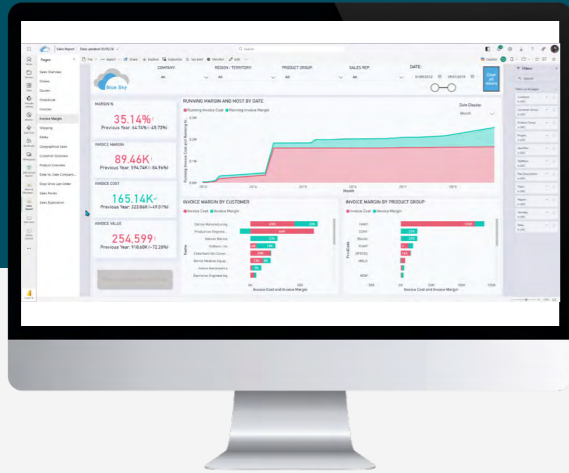


Security

Capabilities in Power BI build on Microsoft Office 365 strengths in security and enable customers to empower every user with Power BI and better protect their data no matter how or where it is accessed. A workspace administrator can set up row level security allowing you to fine tune what data your report consumers see.

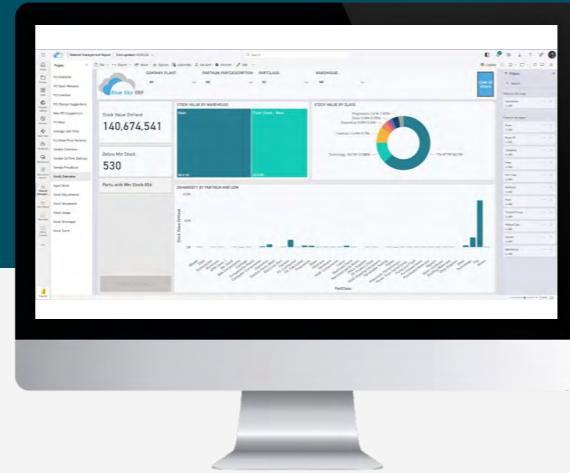
*Pro License will be required for Power Bi development

The Blue Sky ERP Reports in brief...



Sales Report

- 15 Report Pages with covering Invoices, Orders, Quotes and More
- Easily filter by Company, Region, Territory, Customer Group, Sales Person and other fields of your choice
- Sales Related Key Performance Indicators
- Sales Pipeline Reporting
- Geographical Reporting
- Customer & Product Margin Analysis
- Risk analysis via Pareto
- On Time Delivery Reporting
- Explore Data using Microsoft Powered AI
- Year on Year Comparison by Order Value and Order Count



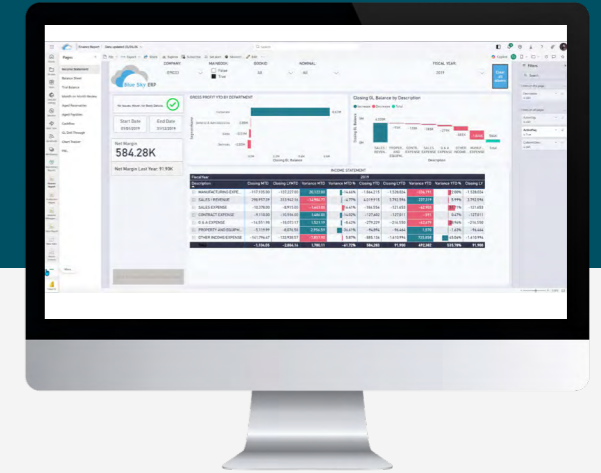
Material Management Report

- 18 Report Pages covering Inventory and Purchasing
- Easily filter by Company, Part Class, Part Number and Vendor
- Purchasing Related Key Performance Indicators
- Purchase Price Changes and Variances
- Purchase Order Suggestions and Changes
- Geographical Purchase Reporting
- Stock Movement Analysis
- Predicted Material Shortages
- Stock adjustments, movement and usage



Production Report

- 12 Report Pages
- Easily filter by Company, Department, Operation and Resource Group
- Report Labour Hours and Quantity by Week
- Employee Labour Hours Reporting
- Labour Utilisation
- Report Labour Hours by Resource
- Production Attainment Reporting
- Job Costing Analysis
- Production Load Reporting



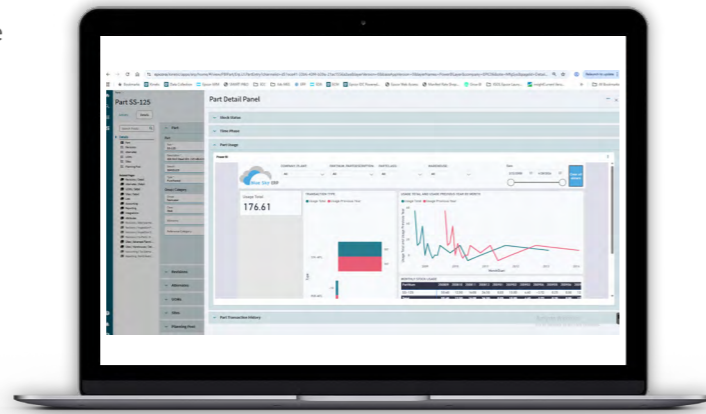
Finance Report

- 9 Report Pages
- Easily filter by Company, Currency and Fiscal Periods
- Income Statement & YoY Comparison
- Balance Sheet
- Trial Balance
- Chart Tracker
- Month on Month Financial Movements
- Overhead Analysis
- Aged Receivables & Payables
- Periodic Posting GL Drill Through to transaction level detail



Power BI Embedded and SQL Endpoint

Embedding Power BI directly into your ERP eliminates the friction between transaction data and actionable insight. Your team stays in operational context, no toggling between systems, while gaining real-time visibility into orders, inventory, production, and financials. The result is faster decision cycles, fewer data silos, and measurable improvements in operational efficiency.



Power BI being embedded in Epicor Kinetic ERP.



Epicor Kinetic Cloud customers will get a SQL Analytics Endpoint as part of the package.

Figure 1: Magic Quadrant for Analytics and Business Intelligence Platforms



97% of the Fortune 500 Companies use Power BI

Why Power BI?

As a business we firmly believe that Power BI should be the product of choice for any business considering implementing a Business Intelligence solution. Below is a list of the main reasons why we hold this belief:

Data Visualisation: Power BI allows users to create visually appealing and interactive reports and dashboards from various data sources. This makes it easier to understand complex data sets and identify trends, patterns, and outliers.

Data Analysis: With Power BI, users can perform advanced data analysis tasks such as filtering, sorting, and grouping data to gain deeper insights. It supports a wide range of analytical functions and calculations, including DAX (Data Analysis Expressions), which allows for complex calculations and aggregations.

Data Integration: Power BI seamlessly integrates with a variety of data sources, including databases, Excel files, cloud services, and online services like Salesforce and Google Analytics. This means users can pull data from multiple sources into a single report or dashboard for comprehensive analysis.

Real-time Reporting: Power BI supports real-time data streaming, enabling users to monitor and analyse data as it changes in real-time. This is particularly useful for tracking key performance indicators (KPIs) and making data-driven decisions quickly.

Collaboration and Sharing: Power BI enables users to share reports and dashboards with colleagues and stakeholders within and outside their organization. This fosters collaboration and ensures that everyone has access to the same up-to-date information.

Mobile Accessibility: Power BI offers mobile apps for iOS, Android, and Windows devices, allowing users to access their reports and dashboards from anywhere. This ensures that decision-makers can stay informed even when they're on the go.

Security and Compliance: Power BI provides robust security features, including data encryption, row-level security, and integration with Azure Active Directory for user authentication. It also helps organizations comply with data protection regulations such as GDPR and HIPAA.

Scalability: Power BI is highly scalable, capable of handling large volumes of data and supporting thousands of users. Whether you're a small business or a large enterprise, Power BI can scale to meet your needs.



Get in touch

Telephone: **+44 (0) 29 2105 5995**

Email: **hello@blueskyerp.co.uk**

Blue Sky ERP Office
Maestrannon, Carno Road,
Caersws, Powys, SY17 5JA
UK

www.blueskyerp.co.uk

